

Nombre: Jemy Carolina López Arfanduez
 Instructor: Geraldine Mendoza

1. Exercise. True or False

- | | |
|---------|---------|
| 1 True | 5 True |
| 2 True | 6 True |
| 3 False | 7 False |
| 4 False | 8 True |

9 True.

2. Complete the directions with the correct expression from the word bank

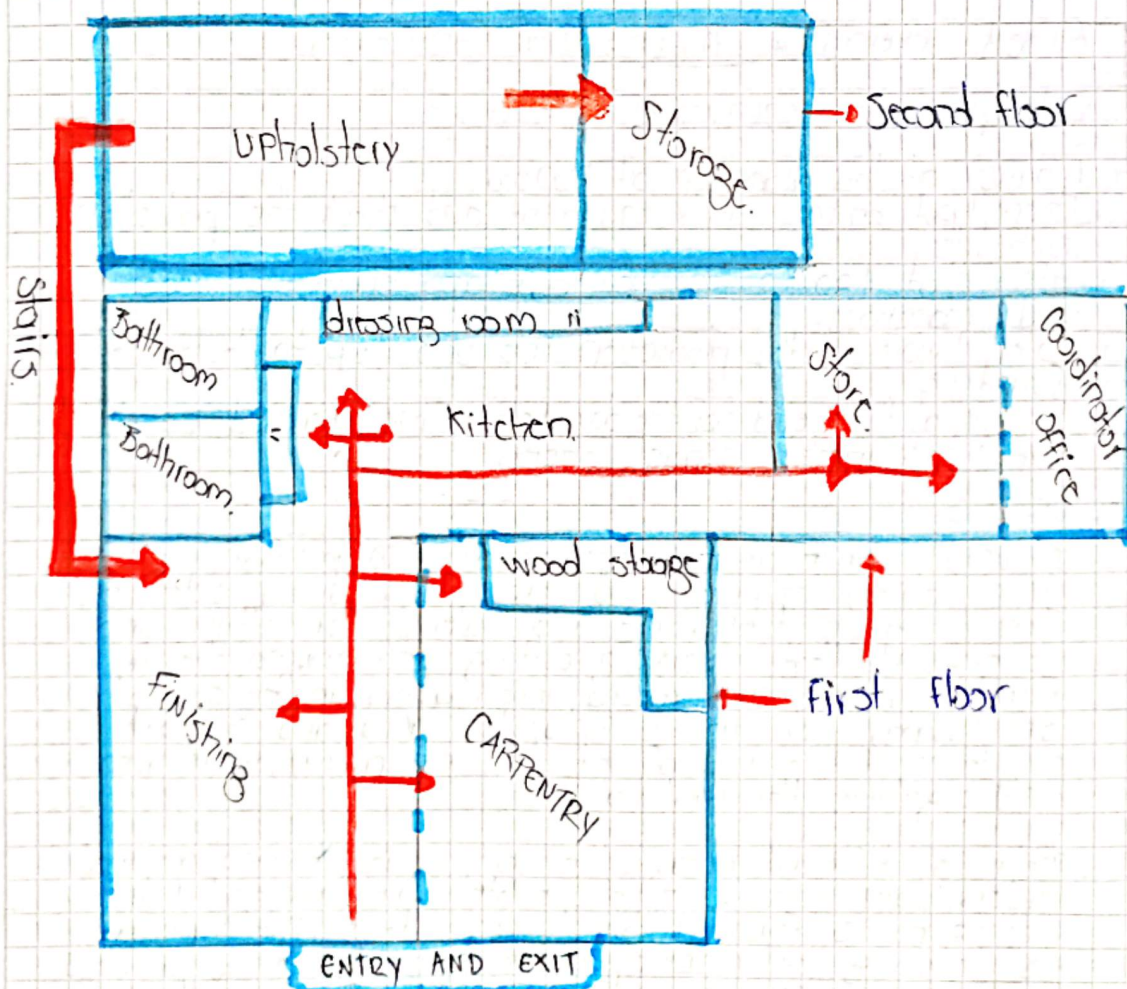
- 1 Go straight
- 2 Between
- 3 Turn right

- 4 Next to
- 5 Walk past
- 6 Turn left

3. Look at the example ^{map} and answer in complete sentences.

- 1 The warehouse is next to the production area.
- 2 The bathroom is next to the quality control area.
- 3 The quality control area is between the warehouse and the production area.
- 4 Go straight from the main gate the turn right the office is on the left.
- 5 Go straight the turn left, the quality control area is next to the warehouse.

4.



Excuse me, where is the upholstery area?

It is on the second floor, next to the storage area.

How do I get there from the entrance?

Go straight, past the carpentry and finishing area. Then go up the stairs.

What do I do after the stairs?

Go straight and you will find the upholstery at the end.

Thank you very much.
You're welcome.

Route paragraph.

Go straight from the entry and exit to the carpentry area. Walk past the finishing area and continue straight. Then go up the stairs to the second floor. Turn right and walk past the storage. The upholstery area is at the end, next to the storage.

When you reach the bathrooms turn right. Walk past the dressing room and the kitchen. Go straight to the end and you will find the storage. The coordinator's office is in front of the storage.